

PRE-ASSEMBLED ALUMINUM STOREFRONT DOORS ARE HERE!

BY EXPI-DOOR®

**TILT IT UP,
LOCK IT DOWN,
WALK AWAY!**

Installs in metal building wall with subframe system. Also—new or existing masonry, wood or steel framed opening!



6' x 7' DOOR SYSTEM (76" x 86") WITH 3' OR LESS TRANSOM AND 16" – 24" SIDELITES



6' x 7' DOOR SYSTEM (76" x 86")



3' x 7' DOOR SYSTEM (40" x 86") WITH 3' OR LESS TRANSOM AND 16" – 24" SIDELITES

ALUMINUM STOREFRONT ENTRANCES ARE HERE!

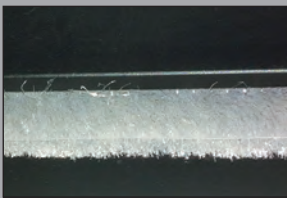
EXPI-DOOR® expands our offerings once again.

We are proud to announce that we can now service our customers with yet another innovative, attractive opening for your new building. We don't just offer you a strong, secure, long-lasting, heavy-duty exit door. Why only limit ourselves to back doors? The front entrance of your building tells clients and tenants that you care about security as well as cleanliness and order! All of the Storefront Entrance openings we offer for your new building are medium stile entrances with a 10" tall bottom rail for ADA consideration to meet a broad range of traffic requirements. But, the cost of these entrances scares people away, so EXPI-DOOR® has found what we feel is a superior price when compared to our competitors.

Our standard offerings cover all requirements including ADA Compliancy, Life-Safety Compliancy AAMA and ANSI requirements. That just about covers it all.

We offer a single 3' x 7' entrance as well as a paired 6' x 7' opening. Both are available with sidelites or transoms in the size of your choice. All doors are glazed by EXPI-DOOR® with 1" thick clear tempered insulated glass, and if needed, glass is available in Bronze Tint, Low-E, or both!

Features:



Felt Weatherstrip



Adjustable, ADA, ½" High, Attached Threshold



Adjustable, Surface-Mounted Aluminum Sweep
Applied to both leaves of door pairs with nylon brush.



Surface, Parallel-Arm Closer

Typically with drop plate included on both leaves of door pairs. Finish to match the door and frame finish.

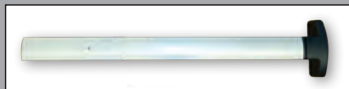


Standard Push Bar
(Not a Panic Exit Device!)

Standard Push/Pull Bars
Included on each Leaf of door pairs. Finish to match the door and frame finish.



Standard Pull Handle



OPTIONAL
3700 Rim Panic Bar



Adams-Rite
1850 MS
Hookbolt
Lock and
FP-1 Face
Plate

CY-3 Thumb
Turn and
CY-1 Cylinder

Heavy-Duty, High Security Hookbolt Deadlock
With thumb turn inside and keyway outside.



**STANDARD
Top and Bottom Pivots**
(Butt hinges are available upon request). Applied to both leaves of door pairs. (OP-6 and 7 Offset Pivots)



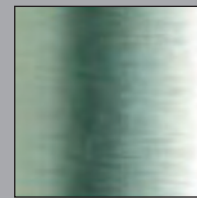
**Top and Bottom
Manual Flush-Bolts**
Applied to the leaf opposite the leaf with the lock-set. Standard ANSI 6¾" x 1". Finish to match the door and frame finish.



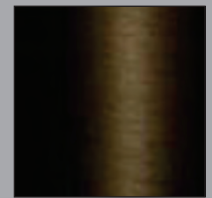
OPTIONAL
Standard Weight 4" x 4½"
Ball-Bearing, NRP, Hinges
1½ pair on single doors,
3 pair on door pairs.

Other hardware options are available — call for a quote today!

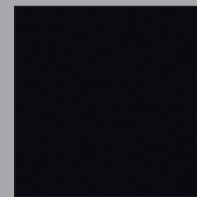
Standard Finishes:



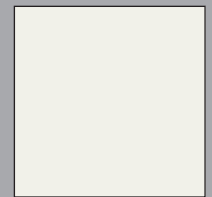
Clear Anodized



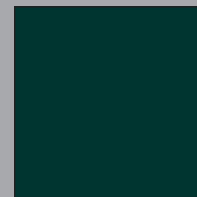
Dark Bronze Anodized



Black



Bone White



Hartford Green

Full palette of colors available from EXPI-DOOR® Systems. Some colors add cost and lead-time.



Scan this QR code with your smart phone and link to our website for more information.

EXPI-DOOR®
SYSTEMS INC.

Member of the Bay Family of Companies

3146 Yeager Drive
Green Bay, WI 54311
920-393-4028 FAX: 920-393-4452
TOLL FREE: 877-528-8537
www.expi-door.com

SDSS0414/2500HEY